



International
Catholic Association of
Therapists & Coaching

Child Abuse Response Protocol

ICAT&C "International Catholic Association of Therapist & Coaching"

1. INTRODUCTION, PRINCIPLES, AND COVERAGE

ICAT&C is an international association of professionals in Psychology and Coaching with the aim of providing society with professionals in these fields who uphold Catholic values and principles, instilling trust in their clients/patients. Values that place individuals at the center of everything.

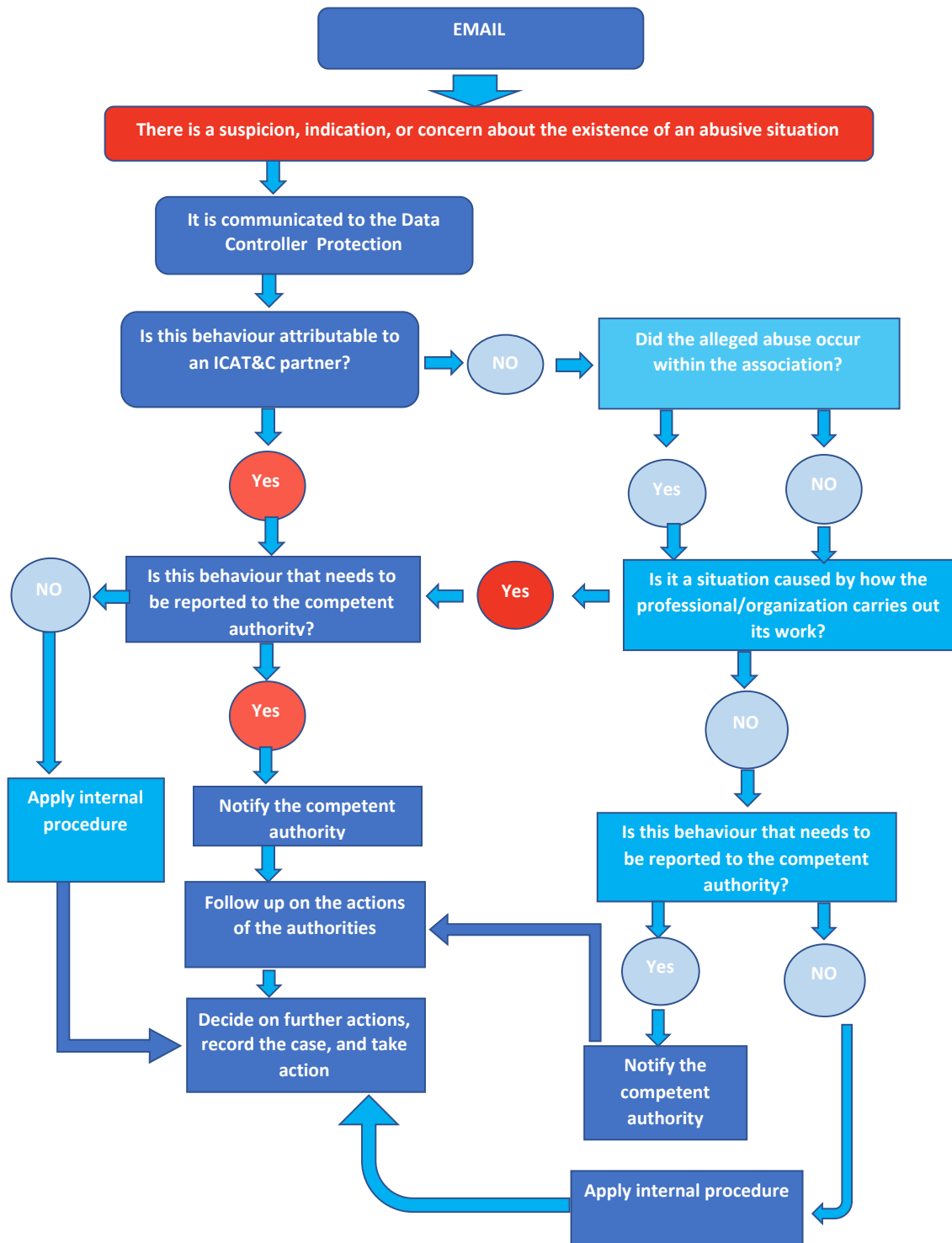
For this reason, the entire environment surrounding our professional associates and client patients should be safe from possible abuses, especially concerning children and vulnerable individuals. To achieve this and ensure the safety of these groups, we have created this response protocol that is intended for use in the event of such cases.

This protocol is governed in compliance with the United Nations Convention on the Rights of the Child, the Council of Europe's Convention on the Protection of Children against Sexual Exploitation and Abuse (Lanzarote Convention), and the legislation of each country in which the association operates. This protocol will be applicable to all professionals associated with ICAT&C and will be guided by the following principles:

- The protection of the rights of children and vulnerable individuals is our top priority.
- Respect for the confidentiality, integrity, and privacy of the individuals involved in the case.
- The prevention of child abuse and the promotion of a safe and healthy environment for children and vulnerable individuals.
- Cooperation with the authorities and competent institutions for the protection of children and vulnerable individuals.

2. NOTIFICATION CHANNELS AND FLOWCHART

Upon suspicion or evidence of child abuse or abuse of a vulnerable person, the professional associated with ICAT&C should report it via email to info@icac-world.com, describing the facts and evidence found, using the subject line "Child Abuse or Vulnerable Person Protocol."





3. CASE MANAGEMENT

3.1. Receipt of Notification: Registration The ICAT&C team will receive the notification email and record the information in a confidential database.

3.2. Information Gathering: Initial Investigation: what, who, where, when,... ICAT&C will contact the associated professional within 12 hours to gather more information about the case, including the case history, evidence and facts, identification of the abusers, and the situation of the abused child or vulnerable person.

3.3. Case/Risk Analysis ICAT&C will analyze the collected information and assess the risk of harm to the child or vulnerable person.

3.4. Decision-Making ICAT&C will make decisions based on the collected information and the assessed risk and will coordinate the action plan.

3.5. Action Plan ICAT&C will follow the plan adopted by taking measures and reaching out to the most appropriate judicial or social entities for the specific case.

3.6. Review and Monitoring: Recording ICAT&C will maintain a detailed record of all actions taken in relation to the case, including any necessary follow-up.

3.7. Closure: Recording ICAT&C will close the case once all necessary measures have been taken and appropriate follow-up has been conducted.

This protocol will be reviewed and, if necessary, updated annually to ensure its effectiveness and compliance with legislation and international agreements related to child protection and the protection of vulnerable individuals.



GLOSSARY OF DEFINITIONS

1. Child Abuse: refers to any action or omission by an adult or a person in a position of power that causes harm or risk of harm to a child or vulnerable person.
2. Vulnerable Person: refers to any individual who, due to their age, disability, mental illness, or other circumstances, cannot protect themselves from abuse or exploitation.
3. United Nations Convention on the Rights of the Child: is an international treaty that establishes the human rights of children, including the right to be protected from any form of violence, abuse, or exploitation.
4. Council of Europe Convention on the Protection of Children against Sexual Exploitation and Abuse (Lanzarote Convention): is an international treaty aimed at protecting children from sexual exploitation and abuse.
5. Legislation: the body of laws and regulations that are applicable in a specific country or region.
6. Notification Channel: the means by which the existence of child abuse or abuse of vulnerable individuals is reported. In this protocol, email is used as the notification channel.
7. Flowchart: a diagram that shows the different steps in a process and how they relate to each other.
8. Initial Investigation: the gathering of relevant information about a case of child abuse or abuse of vulnerable individuals, including what, who, where, when, and any other pertinent information.
9. Case/Risk Analysis: the assessment of risk to the victim and any other individuals involved in a case of child abuse or abuse of vulnerable individuals.
10. Decision-Making: the process of evaluating and selecting the available options to address a case of child abuse or abuse of vulnerable individuals.